



**C** **G**  
 Said, woman, take it slow  
**C** **Em**  
 And things will be just fine  
**C** **G** **D (RIFF1)**  
 You and I'll just use a little patience  
**C** **G**  
 Said, sugar, take the time  
**C** **Em**  
 'Cause the lights are shining bright  
**C** **G**  
 You and I've got what it takes  
**D (RIFF1-4X)**  
 to make it, we won't fake it,  
 Oh, I'll never break it, 'cause I can't take it

**SOLO = REFRÃO**

**C G C Em C G D (RIFF1) (2X)**

**RIFF1-4X (Pausa)**

**D G D (RIFF2) G**

**D G D G**  
 Little patience, yeah, oh yeah  
**D G**  
 Just a little patience, yeah  
**D**  
 (Some more patience) I been walking the streets at night  
**G**  
 (yeah) Just trying to get it right  
**D**  
 (Need some patience) Hard to see with so many around  
**G**  
 (yeah) You know, I don't like being stuck in the crowd  
**D**  
 (Could use some patience)  
 And the streets don't change but baby the name  
**G**  
 (yeah) I ain't got time for the game

**D**

(Gotta have some patience)  
 'Cause I need you

**G**

(yeah) Yeah, yeah, but I need you

**C**

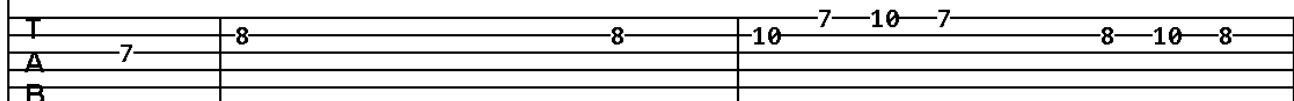
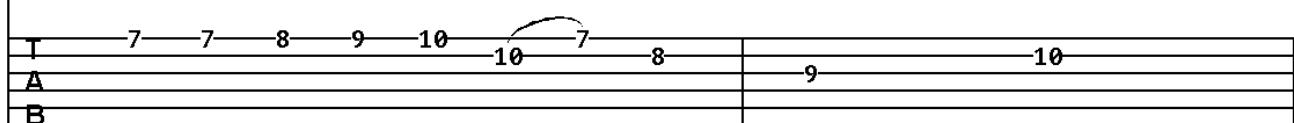
(All it takes is patience)  
 Oh, I need you

**G**

(Just a little patience)  
 Oh, I need you

**C****G (CODA)****D**

(Is all you need)  
 Oh, this time

**INTRO 1 - ASSOVI0****C****G****A****D****INTRO 2****C****G**

## (INTRO 2 - cont.)

**A**

T 10 7 8 9 9

A 7 8 9 9

B

**D**

T 10 8 7 7 10

A 7 7 10

B

**INTRO 3 - ASSOVI0**

**C**

T 10 7 8 9 9

A 7 8 9 9

B

**C**

T 10 7 8 9 9

A 7 8 9 9

B

**C**

T 10 7 8 9 9

A 7 8 9 9

B

**D**

T 10 7 8 9 9

A 7 8 9 9

B

**INTRO 1,2 - base**

**C**

T  
A  
B 2 2 0 1 0 1 0 1 0 1 0

**G**

T  
A  
B 2 2 0 0 0 1 0 0 2 0 0 0

**A**

T  
A  
B 0 2 2 2 2 2 0 3 0 2 2 0

**D**

T  
A  
B 0 2 3 2 3 2 0 0 0 0 0 2

**RIFF 1**

**D** **C**

T  
A  
B 0 0 0 0 0 0 0 0 0 0 0 1 0 1 0 1 0

**SOLO 1 (clave uma oitava acima)**

Chords: C G C Em

T 8-7 8 8-10-8 10 12 8 8-7 8 8-10 10 12 8-7

A

B

Chords: C G D

T 8 8-10-8 10 12-10-8 8 8-10 12-10-10 12 14-12 15-12 15

A

B

**SOLO 2**

Chords: C G C Em

T  $\flat$  5-8 r 7-5-7 7  $\flat$  4-7 r 7-5 7  $\flat$  5-8 r 7-5-7 9 8-10  $\flat$  7 10 8 9 8-10

A

B

Chords: C G D

T  $\flat$  10 10-8-10 8-10  $\flat$  8-10 9 8-10 8-10  $\flat$  10-10

A

B

**RIFF 2****D**

Musical notation for Riff 2, D chord. The notation is in treble clef with a key signature of one sharp (F#). The melody consists of eighth notes and quarter notes. The guitar part is shown with fret numbers: 14, 14, 13, 13, 12, 12, 10, 10, 8, 8, 7, 7.

**G**

Musical notation for Riff 2, G chord. The notation is in treble clef with a key signature of one sharp (F#). The melody consists of eighth notes and quarter notes. The guitar part is shown with fret numbers: 7, 5, 5, 3, 3, 3.

**CODA****D**

Musical notation for Coda, D chord. The notation is in treble clef with a key signature of one sharp (F#). The melody consists of eighth notes and quarter notes. The guitar part is shown with fret numbers: 3, 2, 3, 2, 5, 4, 0, 2, 2, 2, 0.